

Automatically Backing Up Amanda

(Amanda@Work.Group/Windows creative series document 2)



Description: This series of documents is designed to show the power and flexibility of the Amanda@Work.Group/Windows product. This second document demonstrates how to setup Amanda to perform an automatic system backup. To do this, we'll take advantage of Windows Scheduler and Amanda's new Backup utility (backup.exe).

About Amanda Backup

Backup was introduced in version 3.12 and replaced the older Backrest program. Backup was designed to make Amanda backups and restoration simple. Backup will perform a full system backup or restore based on your actions. When Backup runs if the Amanda service is running it will be stopped and restarted when the backup is complete.

To run Amanda Backup, click start > programs > Amanda Server > Backup. You can also start the backup program by typing "Backup" at the c:\amanda prompt and from the Amanda control panel. After starting backup you'll see the following windows dialogue (as shown in figure 1).

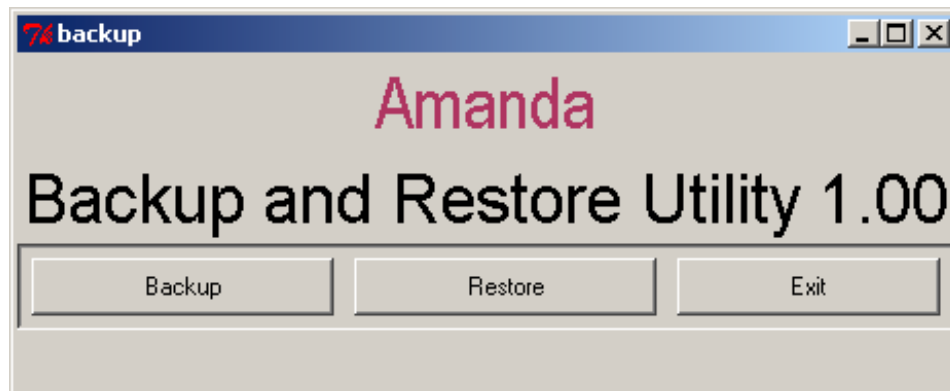


Figure 1

Backup has a simple interface and provides three choices, Backup, Restore, and Exit.

Backup Choosing this option will stop the Amanda service and perform a full system backup in the specified target location. If the Amanda service is running at the time you started the backup the service will be restarted when the backup is complete.

Restore Choosing Restore will stop the Amanda service and restore all of your Amanda system data from a previous backup. Once restored if the Amanda service was previously running it will be restarted automatically.

Automatically Backing Up Amanda

(Amanda@Work.Group/Windows creative series document 2)

Important Note: Make absolutely sure you want to restore your data from a backup (typically for disaster recovery) because your current data **WILL** be overwritten when your backup data is restored.

Exit Closes the backup program.

After clicking backup, you'll see the following dialogue boxes as shown in figures 2 and 3.

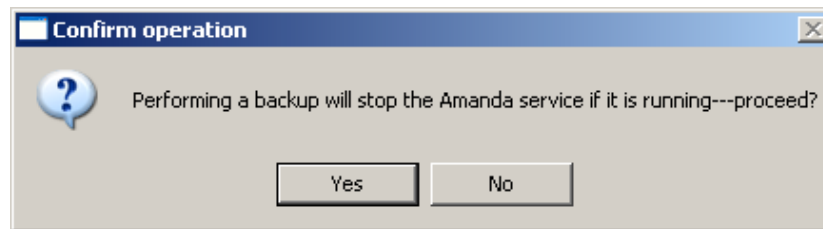


Figure 2

Clicking yes will stop the Amanda service, and continue the backup process by prompting to choose a directory to save the backup (as shown in figure 3).

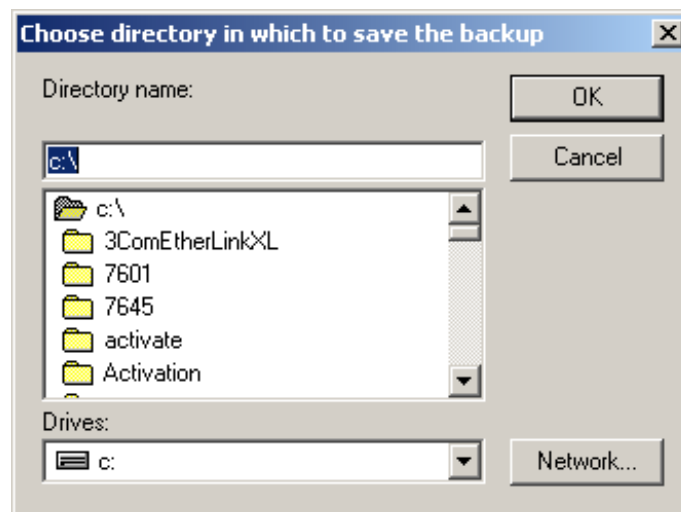


Figure 3

Make a note as to where you backup your Amanda system data. This way it'll be easy to restore if necessary.

Note: You can backup your Amanda system locally (to the same hard disk), to a secondary hard disk (slave drive), to a map drive (on a network server), or any other device you wish.

Running Backup from a Command Line

Automatically Backing Up Amanda

(Amanda@Work.Group/Windows creative series document 2)

In addition to running backup from the GUI interface you can also run backup from a command line by typing "backup c:\<target folder>" as shown in figure 4.

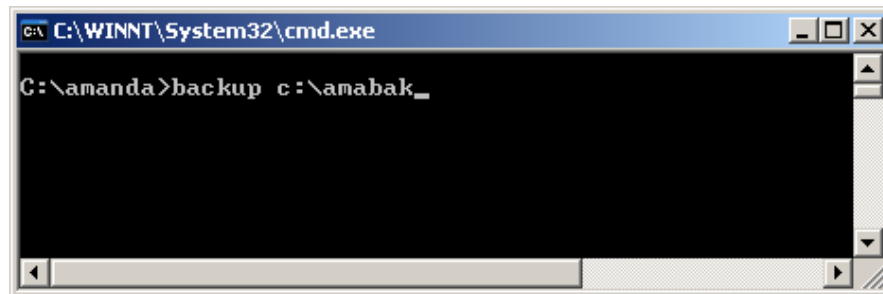


Figure 4

The same rules apply to the command line backup. If the Amanda service is running it will be stopped and then restarted when the backup is complete. If the specified target folder doesn't exist it will be created automatically.

About Windows Scheduler

Windows scheduler is an application that comes with Windows 2000/XP which allows you to schedule a task to be run at a future time and date. You can access windows scheduler in the control panel (as shown in figure 5)

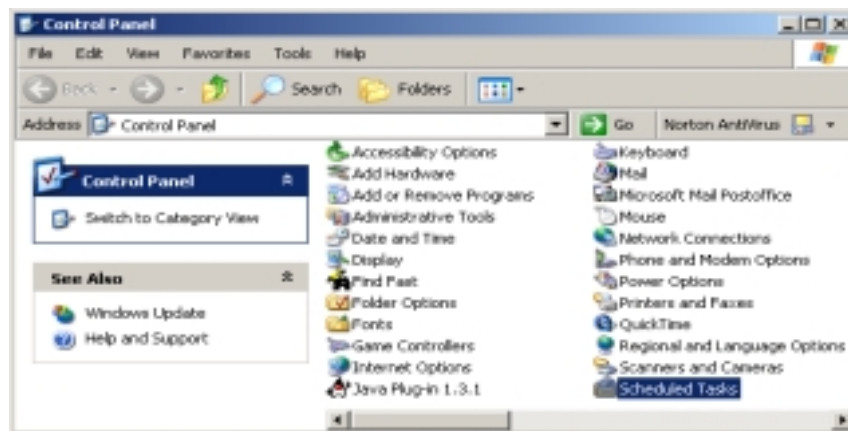


Figure 5

Essentially what were going to do is schedule Amanda's Backup program to be run automatically. To make this easy were going to use a scheduled task to run backup from a command line specifying where the backup will be stored (as shown in the figure 4) above.

To schedule a task, double click on "Scheduled Tasks"

Automatically Backing Up Amanda

(Amanda@Work.Group/Windows creative series document 2)

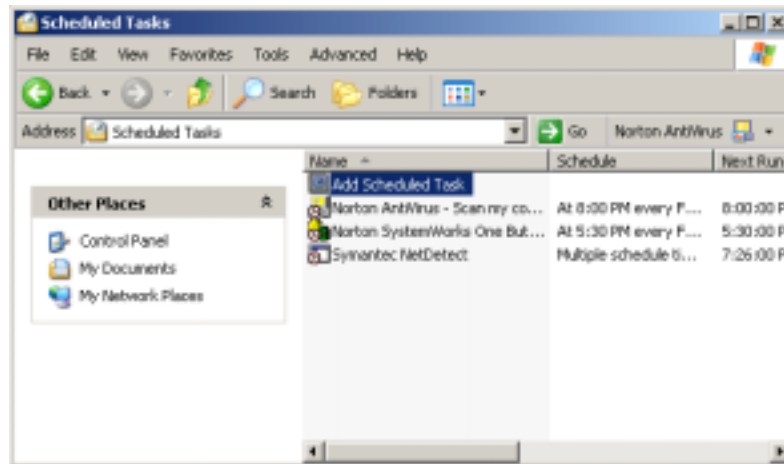


Figure 6

And then choose to "Add Scheduled Task". Use the scheduled task wizard to add the new task. Double clicking on Add scheduled Task will launch the task wizard (as shown in figure 7 below).

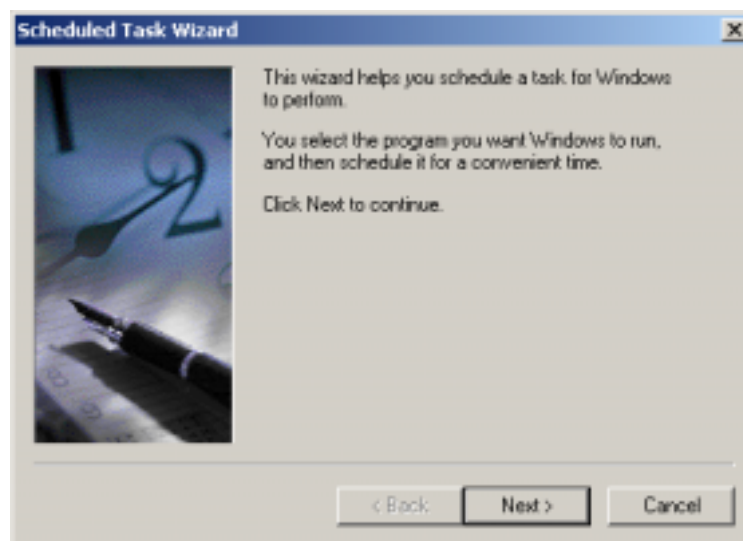


Figure 7

Click next to continue and you'll be prompted to choose the program you wish to run (as shown in figure 8).

Automatically Backing Up Amanda

(Amanda@Work.Group/Windows creative series document 2)

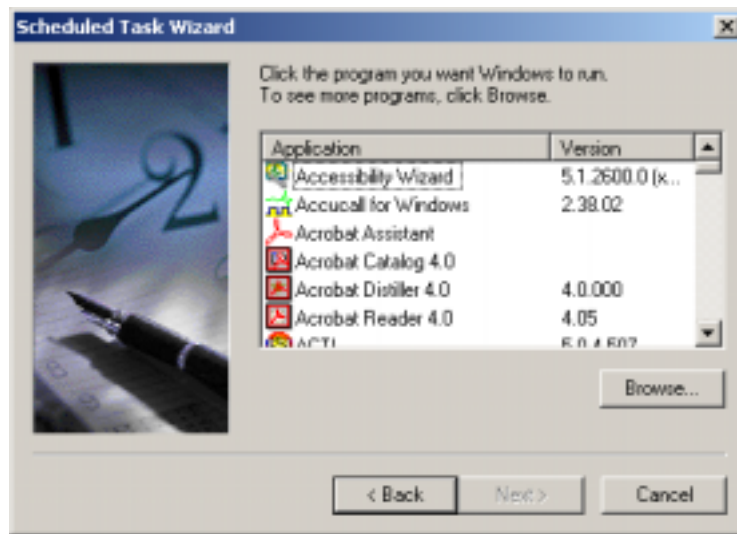


Figure 8

Click browse, and select backup.exe located in the c:\amanda folder (as shown in figure 9).

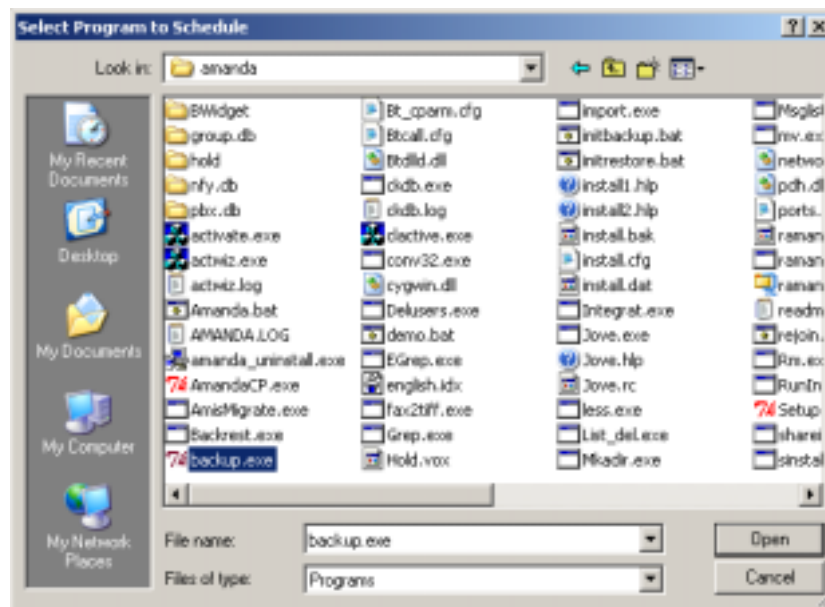


Figure 9

Automatically Backing Up Amanda

(Amanda@Work.Group/Windows creative series document 2)

Next click open to continue setting up the task and you'll be prompted to select how often you want backup to run (as shown in figure 10), daily usually isn't necessary, most backups are done weekly or monthly.



Figure 10

Next select the time and day you want backup to be run. Usually running the backup outside of normal business hours is best (as shown in figure 11).

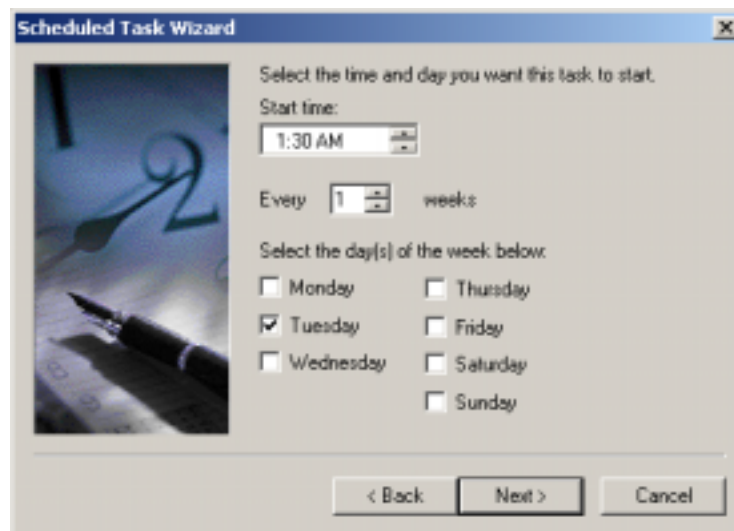


Figure 11

Clicking next, you'll be prompted to validate yourself as shown in figure 12. Enter the appropriate administrator account and password and click next to continue.

Automatically Backing Up Amanda

(Amanda@Work.Group/Windows creative series document 2)



Figure 12

After being validated, you'll see the following message stating that you have successfully scheduled the task (shown in figure 13).



Figure 13

Make sure that "Open advanced properties for this task when I click finish" is checked. Then click finish. This will open the details for the backup task so that you can specify the target folder for where the backup data will be stored (as shown in figure 14).

Automatically Backing Up Amanda

(Amanda@Work.Group/Windows creative series document 2)

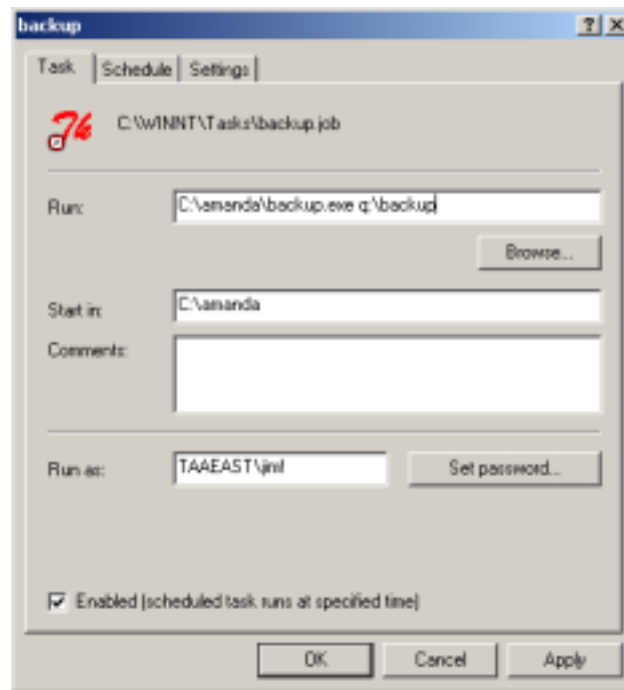


Figure 14

In this example, the Amanda system will be backed up the backup folder on the map drive called q (q is mapped to a network server). Click ok to finish. This task can be modified later by accessing the properties of the task.

This completes the automatic backup. For additional information about Windows Scheduler please consult our Windows 2000/XP documentation.