

# Technical Bulletin

## Amanda Work Group for Windows

### Daylight Savings Time

Due to the recent changes to the daylight savings beginning March 11<sup>th</sup> 2007 Windows based Amanda systems (other than Amanda Portal) will be one hour off from the Windows operating system. Microsoft has released updates for Windows XP Pro to accommodate the new daylight savings time rules. This corrects the time within the Windows operating system, however will not correct the Amanda system time. Amanda's system time is based on the TZ system variable, not the Windows time clock or time zone settings. Depending on the version of Microsoft Windows you are running you should apply the appropriate patch and/or edit the DST days.

#### Step 1: Apply the Microsoft Windows Update

##### Windows XP Pro Systems:

Download and install update number KB931836 from Microsoft. This update can be found here:

<http://www.microsoft.com/downloads/details.aspx?FamilyID=66f1420c-df2d-400b-a8a9-ef9061a9a3ca&DisplayLang=en>

##### Windows 2000 Pro Systems:

There are no updates for Windows 2000 Pro at this time. However Microsoft released a utility called Tzedit.exe. Tzedit.exe can be used to change the dates when the operating system will adjust the time for daylight savings. You can download Tzedit here:

[http://support.microsoft.com/gp/dst\\_hu2?systemlist=w32](http://support.microsoft.com/gp/dst_hu2?systemlist=w32)

#### Step 2: Apply the Microsoft TZ variable update

##### Windows XP Pro Systems:

Download and install update number KB932590 from Microsoft. This update can be found here:

<http://support.microsoft.com/kb/932590>

NOTE: Apply the update for the Windows XP version.

#### Step 3: Additional correction to accommodate TZ system variable –

##### Changing the TZ system Variable

From the [desktop](#), right-click My Computer and click properties. In the System Properties [window](#), click on the Advanced tab. In the Advanced section, click the Environment Variables [button](#). Finally, in the Environment Variables window, add or modify the TZ system variable.

By default the TZ system variable will be set to one of the following depending on your time zone:

EST5EDT  
 CST6CDT  
 PST8PDT

Change the TZ variable value to one of the following. EST represents Eastern Standard Time, CST stands for Central Standard Time, and PST stands for Pacific Standard Time.

TZ = EST5EDT4,M3.2.0/02:00:00,M11.1.0/02:00:00  
 TZ = CST6CDT5,M3.2.0/02:00:00,M11.1.0/02:00:00  
 TZ = PST8PDT7,M3.2.0/02:00:00,M11.1.0/02:00:00

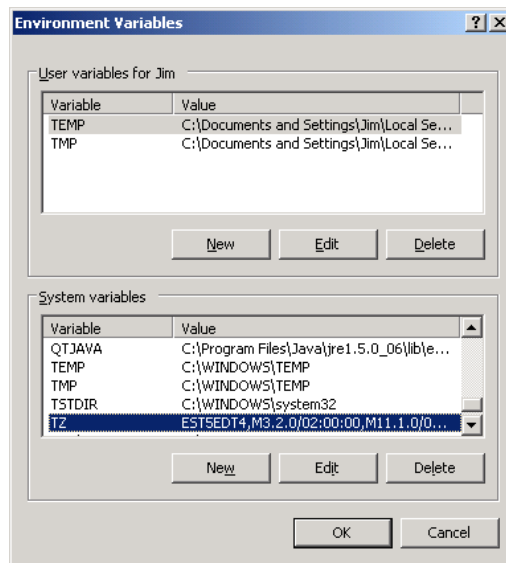


Figure 1: TZ example for Eastern Standard Time

Once the TZ variable has been changed to the new value, apply the changes.

In addition to changing the value for TZ you must also edit the c:\amanda\install.cfg file and add the following setting to the file:

**set clock\_sync false**

Save the file and exit.

Finally, you must cold boot the Amanda PC for the changes to take effect. After changing the TZ variable value and adding set clock\_sync false to the c:\amanda\install.cfg file, shutdown the Amanda PC and power it off. Wait 1 minute and power the Amanda system back on.

Important Note: Changing the TZ value works around this problem nicely. Once these steps are completed the time will only need to be adjusted manually once every four years (leap year).

Additionally, please note that while this will correct the Amanda system time and Amanda will function correctly, Amanda monitor and administrator will show the time off by one hour. This is only cosmetic and Amanda will function properly. Refer to figure 2 and 3 on the following page for additional details.

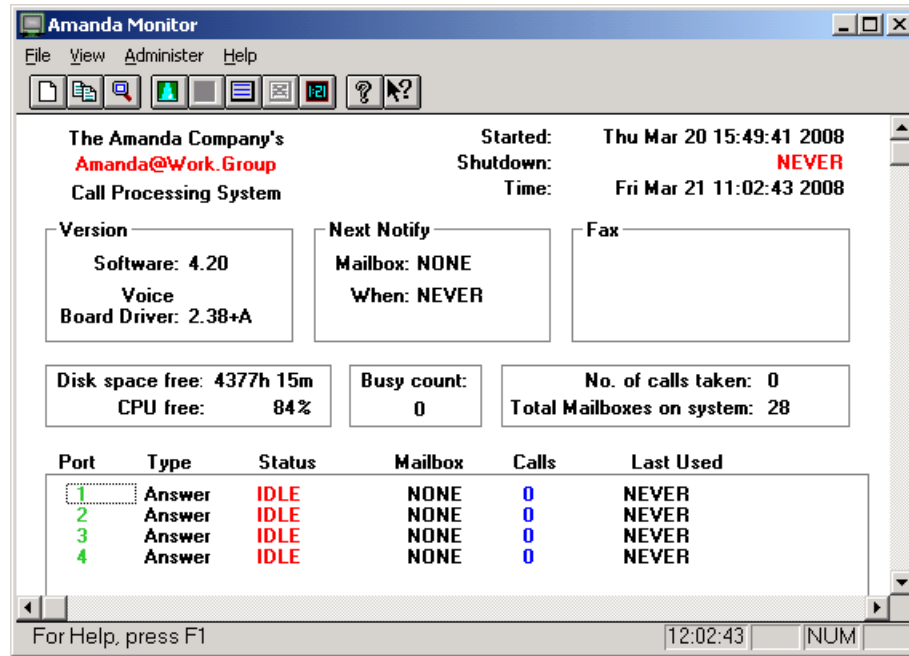


Figure 2: Monitor

Looking at the monitor (figure 1), the time shows 11:02am, however the system time is actually 12:02pm (shown in the bottom right corner). The Amanda system time is actually reflected in the bottom right corner of the client correctly so please use this time to refer to the Amanda system time and not the time value in the client in the top right hand corner of the screen.

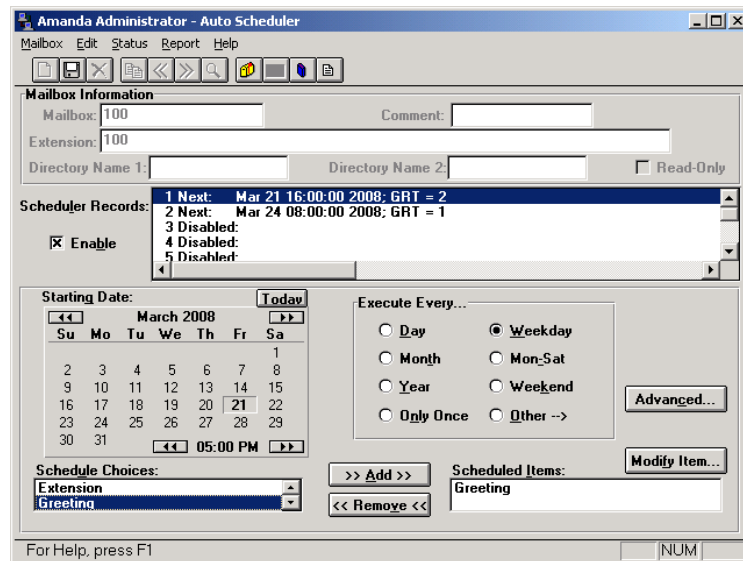


Figure 3: Administrator

Similarly to monitor when using the new TZ variable value, the administrator client will show auto schedule records executing one hour behind within the scheduler record screen. Schedules will properly reflect when they will actually be executed in the calendar. Please refer to the calendar time and not the scheduler record time. Schedules will be executed at the correct time.

### **ALTERNATIVE OPTION - Specially Priced Upgrade to Amanda Portal**

The Amanda Company is offering a specially priced competitive upgrade to Amanda Portal to those customers who would like to take advantage of Amanda Portal and avoid future daylight savings issues. All Amanda system data will be migrated to Amanda Portal (including all mailboxes, greetings, messages, notification records, and auto-schedules). For more information please contact our sales or technical support departments for pricing and availability at 800-410-2745.